



## Washer, Electrical Equipment Bond

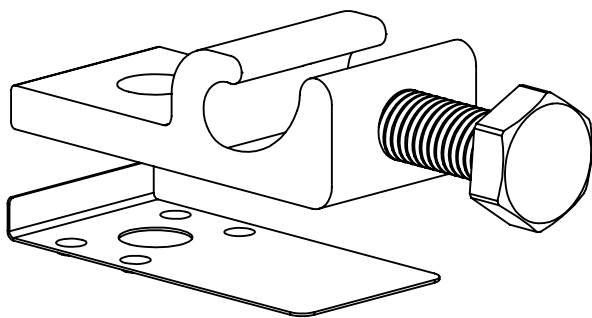
# WEEB

Patent Pending

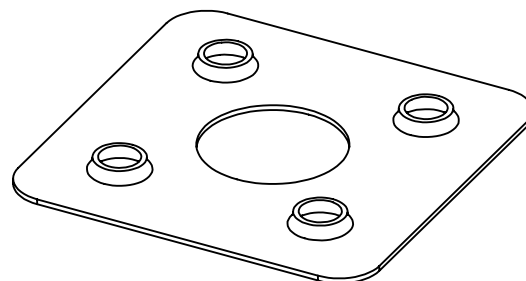
## INSTALLATION INSTRUCTIONS *For ISYS Roof Mount and Ground Mount*

**Please read carefully before installing.**

**Wiley Electronics recommends that the sufficient details of the installation be submitted to the AHJ for approval before any work is started.**



**WEEBLug-6.7**



**WEEB-UIR**

Products are tested to UL 467, CAN/CSA-C22.2 No. 41  
US/Canadian standards for safety grounding and bonding equipment

Document Number 104-0404-000068-003

Wiley Electronics LLC. 2006-2011© – All Rights Reserved

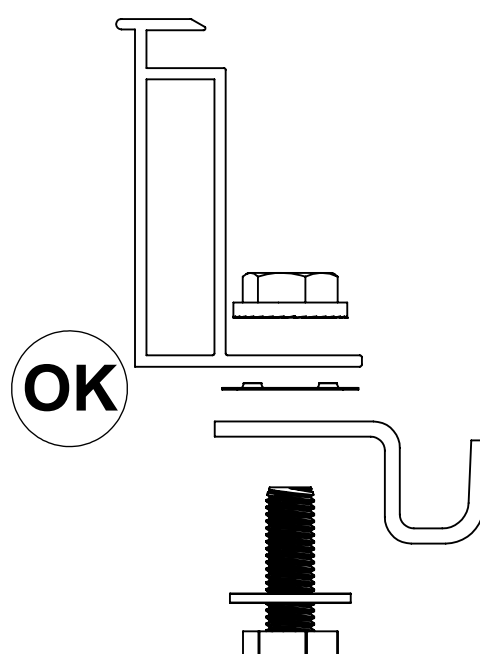
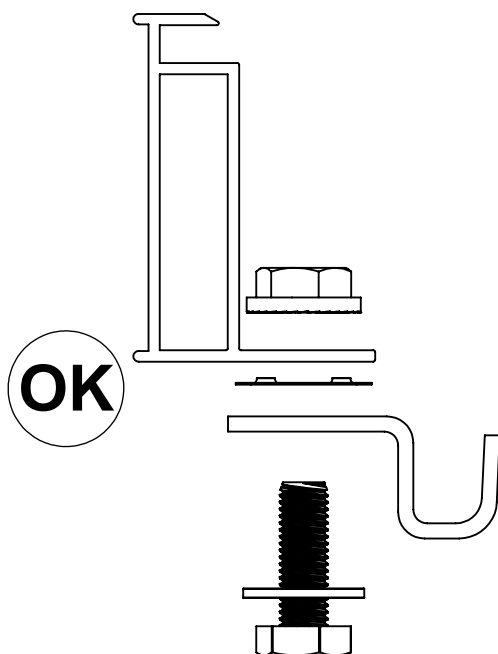
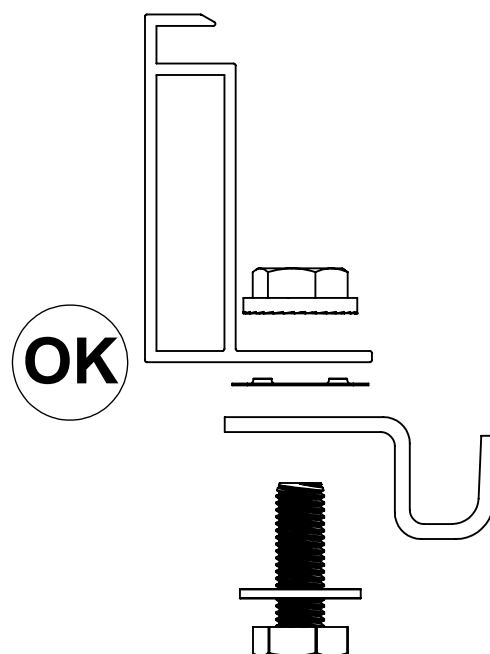
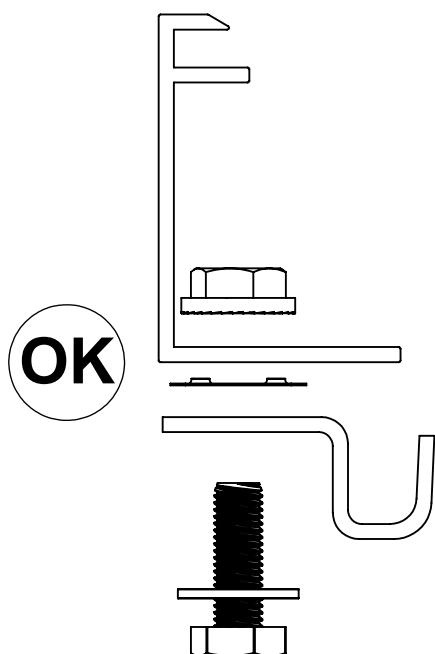


# WEEB COMPATIBILITY

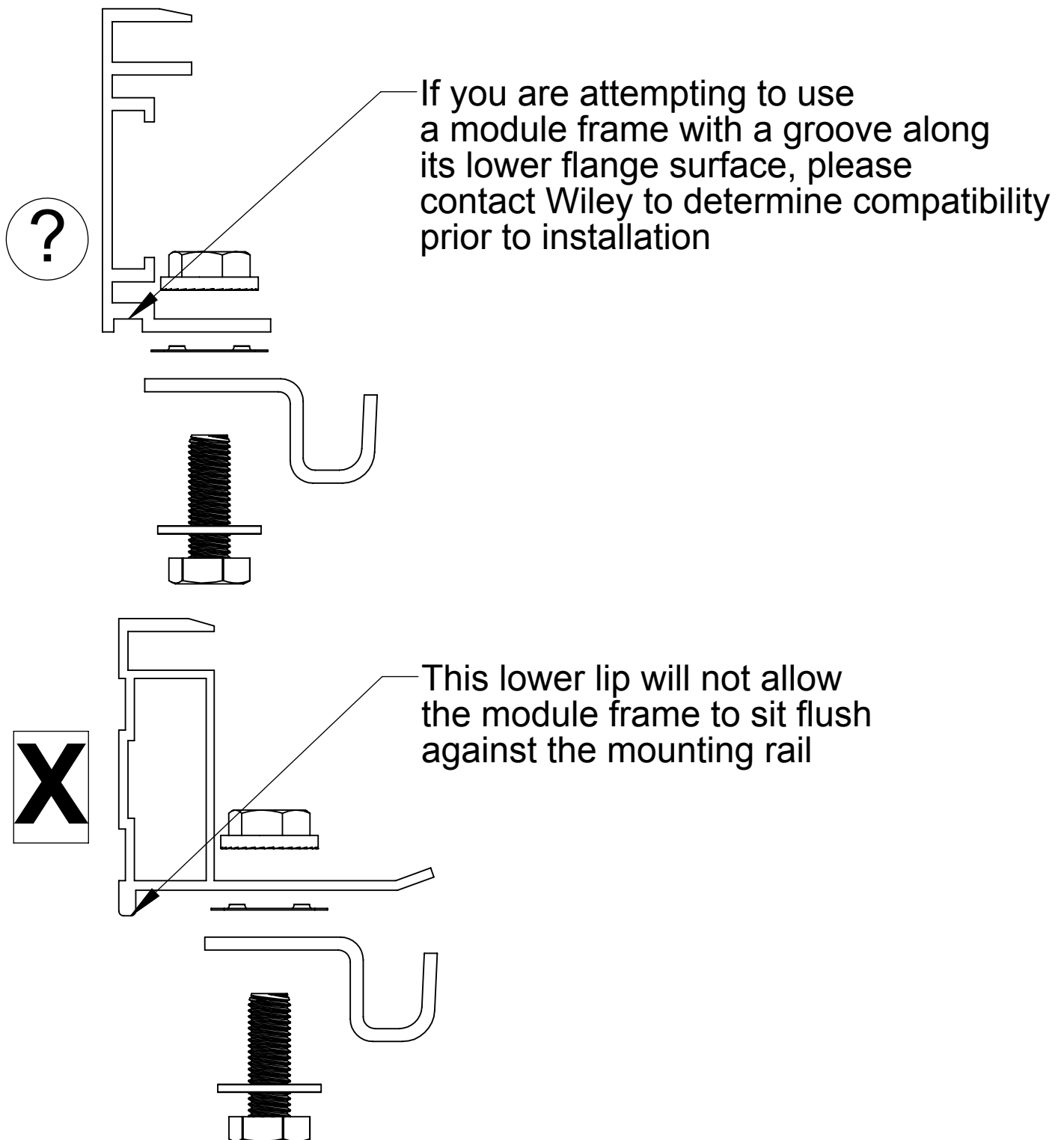
The WEEB family of products can be used to bond anodized aluminum, galvanized steel, steel and other electrically conductive metal structures. All installations shall be in accordance with NEC requirements in the USA and with CSA C22.1 in Canada. The WEEBs are for use with modules that have a maximum series fuse rating of less than 25A.

## Bottom Mounting

The WEEBs used for bonding the PV modules to the mounting rails are compatible with various cross-sections of module frames. The following are examples of module frames that are compatible.



# WEEB COMPATIBILITY



## Important Note:

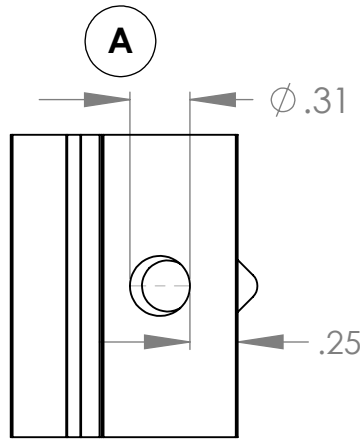
Inspect each module frame used with a WEEB to ensure that the bottom mounting face of the frame is flat, and that there are no hinderances to embedding WEEB teeth. Do not use a module with a frame that prevents the WEEB teeth from embedding fully.

**PLEASE SEE PAGE 4 TO DETERMINE FINAL COMPATIBILITY**

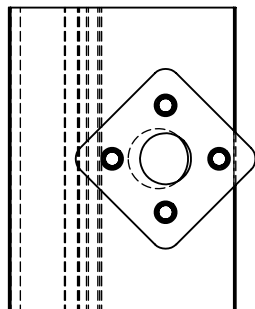
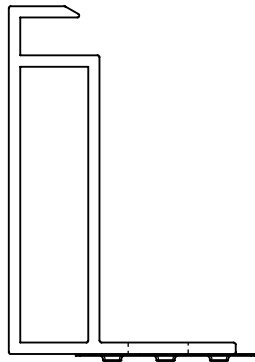
# WEEB COMPATIBILITY

## WEEB-UIR BOTTOM MOUNT SCENARIOS

**BOTTOM MOUNTING THE WEEB-UIR REQUIRES CERTAIN MODULE FRAME SPECIFICATIONS  
PLEASE REVIEW THE SCENARIOS BELOW TO DETERMINE  
HOW MANY WEEB-UIR'S PER MODULE ARE NECESSARY**



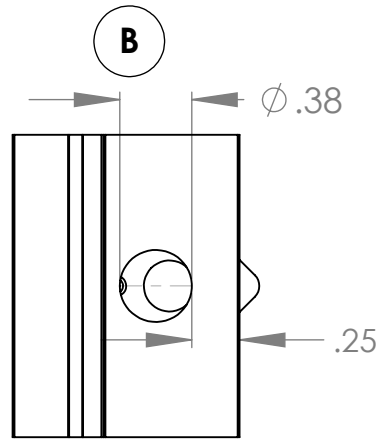
1/4" - 5/16" Module Mounting Hole at least 0.25" away from flange edge



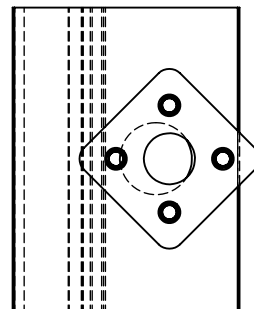
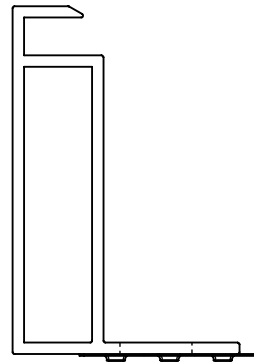
ALL WEEB TEETH EMBED

**ONLY (1) WEEB-UIR  
NEEDED PER MODULE**

**A**



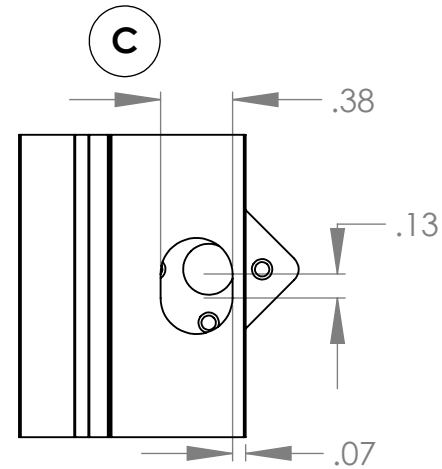
11/32" - 3/8" Module Mounting Hole or 1/4" Module Mounting Hole closer than 0.25" to the flange edge



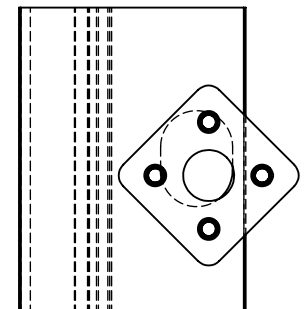
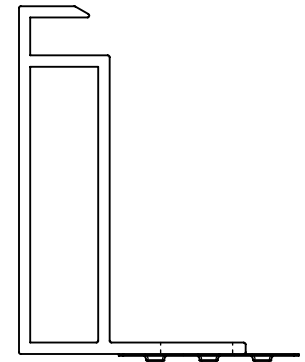
AT LEAST 2 WEEB TEETH EMBED

**ONLY (2) WEEB-UIR  
NEEDED PER MODULE**

**B**



Slotted Module Mounting Hole with maximum dimensions shown above



AT LEAST (1) WEEB TOOTH EMBEDS

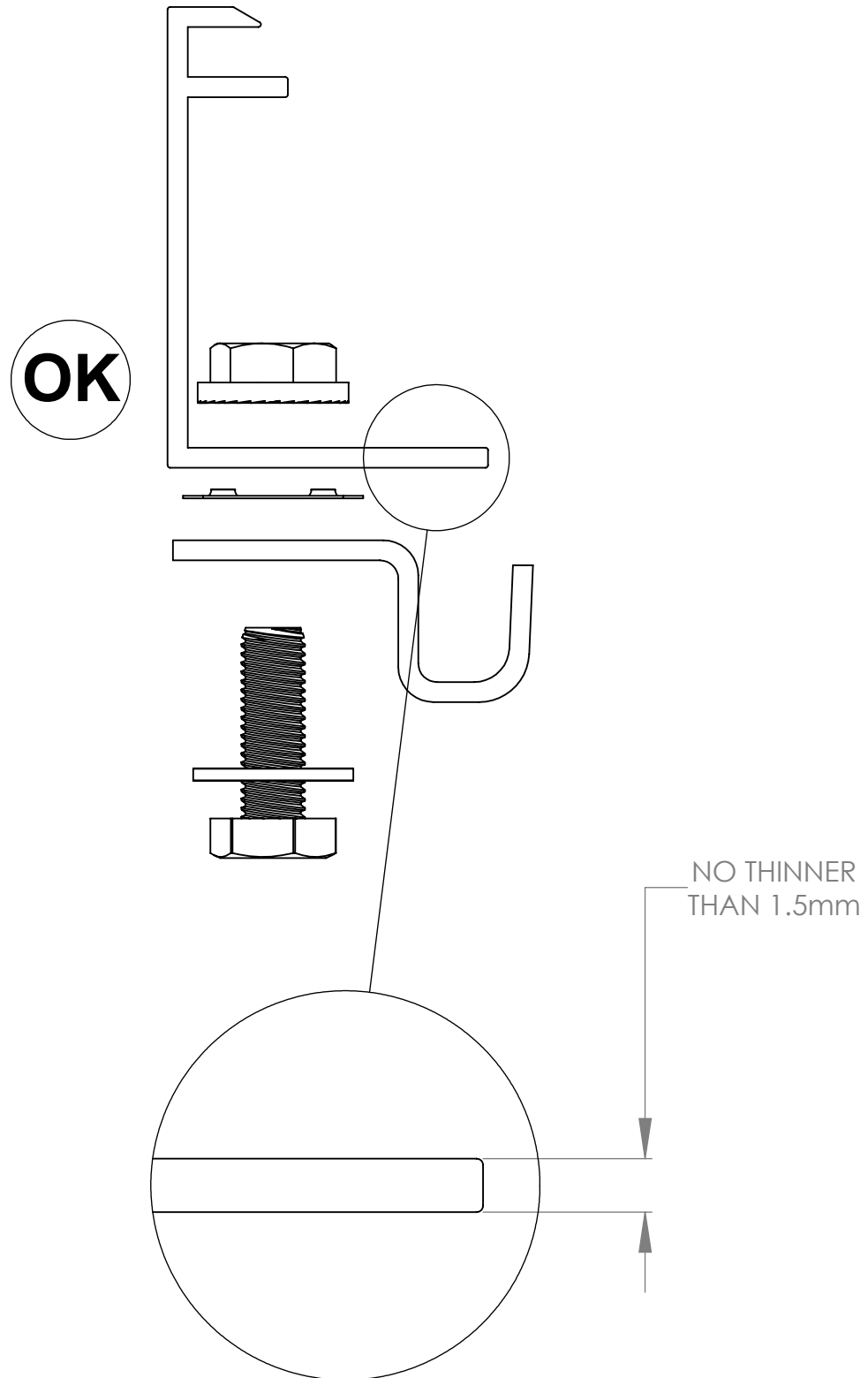
**(4) WEEB-UIR  
NEEDED PER MODULE  
(ONE ON EACH  
MODULE CLIP)**

**C**

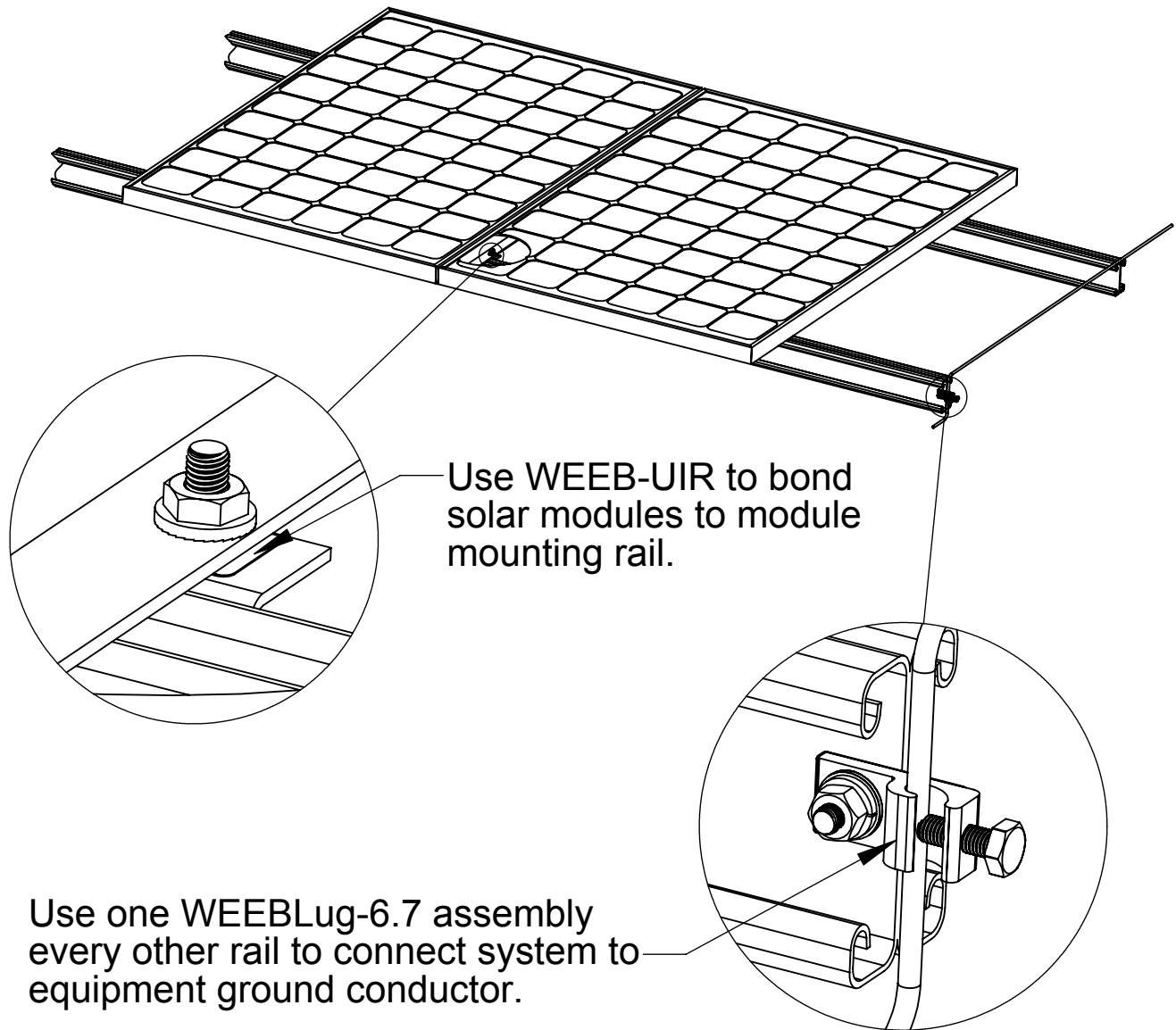
**IF YOUR MODULE FRAME DOESNT FIT ANY THESE SCENARIO'S  
PLEASE CONTACT WILEY TO DETERMINE FINAL COMPATIBILITY**

# WEEB-UIR on Module Frames

Certain module frames do not have enough structural strength to withstand the force required to embed a WEEB. These frames will deform and therefore not allow sufficient penetration of the WEEB teeth. The general requirement for minimum module frame thickness is illustrated below.



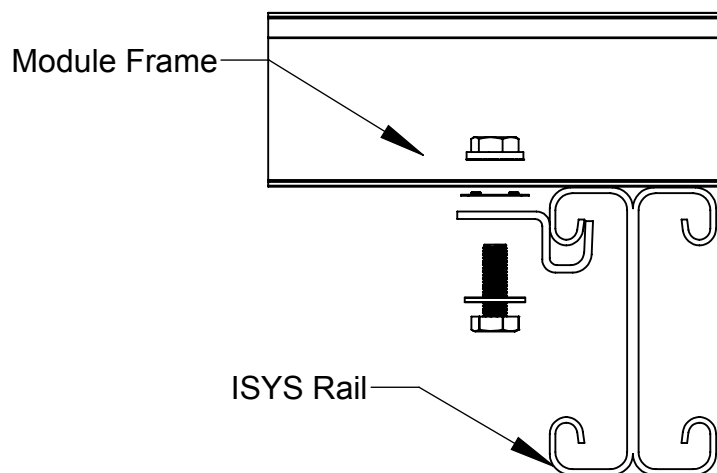
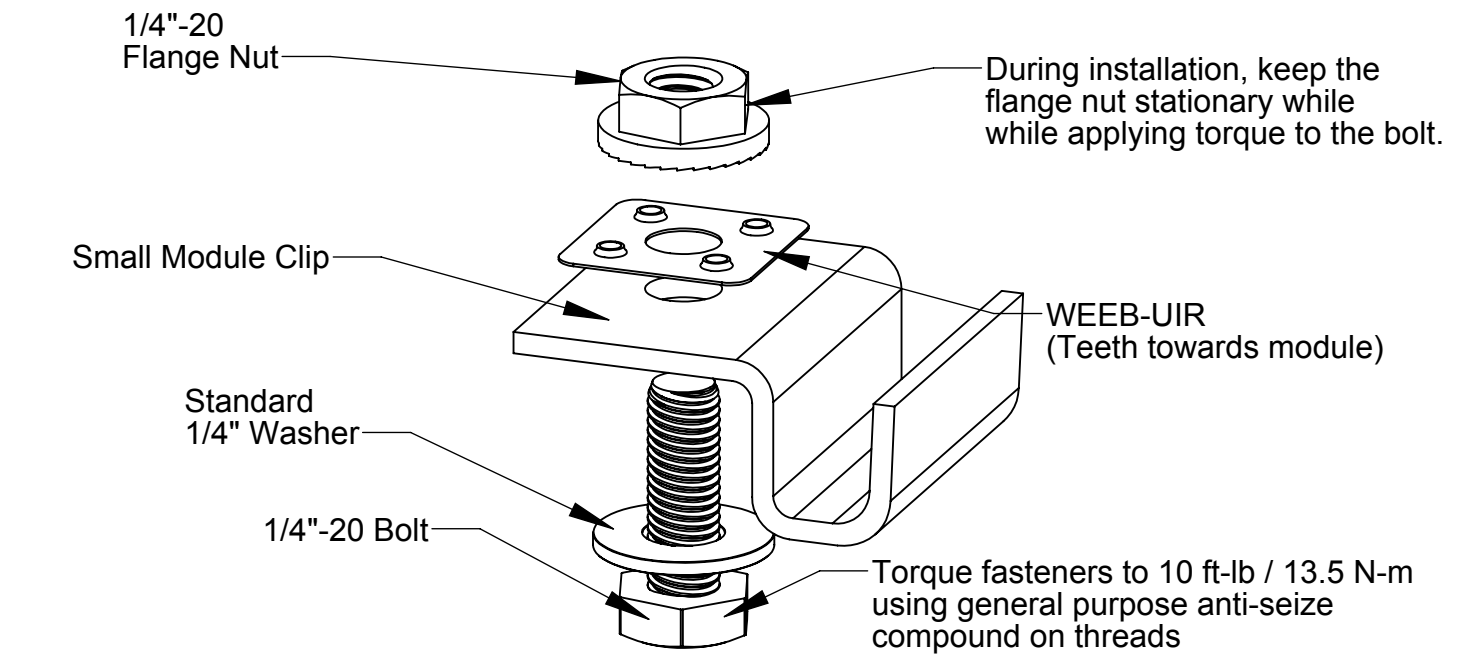
# SYSTEM OVERVIEW



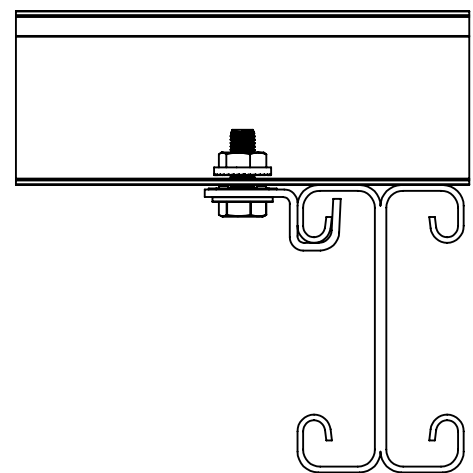
## Important notes

1. Use general purpose anti-seize compound on fastener threads when installing WEEBs.
2. The NEC section 690.43 states, "Exposed non-current carrying metal parts of module frames, equipment, and conductor enclosures shall be grounded in accordance with 250.134 or 250.136(A) regardless of voltage."
3. WEEBs are intended for SINGLE USE ONLY. Functionality will not be guaranteed if reused.

# WEEB-UIR ASSEMBLY



Pre-Assembled

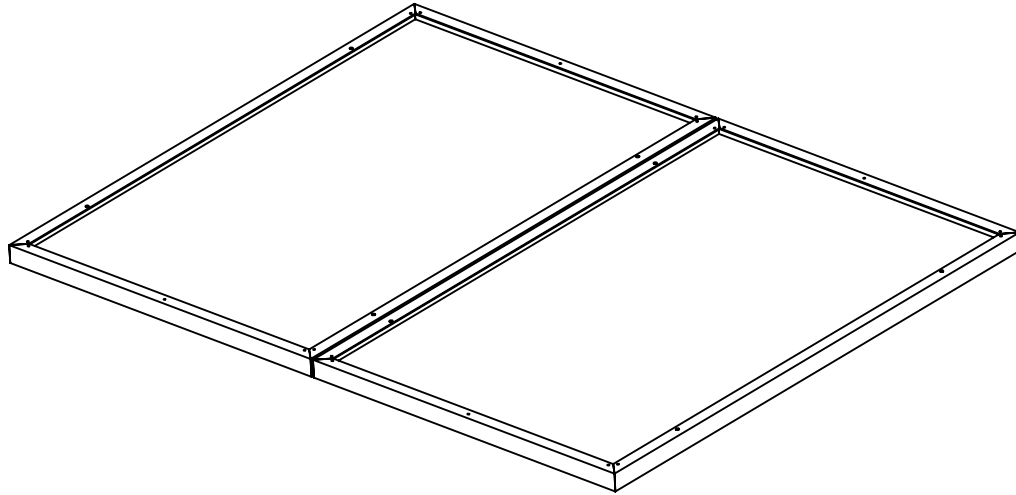


Assembled

# WEEB-UIR ASSEMBLY

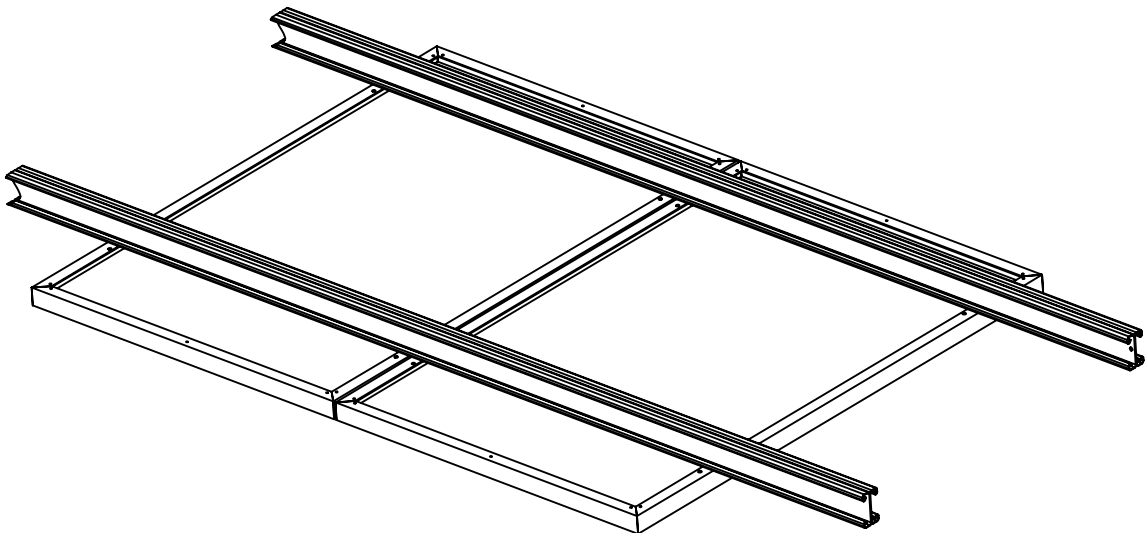
①

Place all the PV Modules, that are required per row, face down on a flat, level and protective surface.



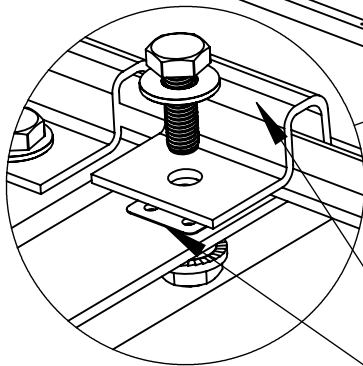
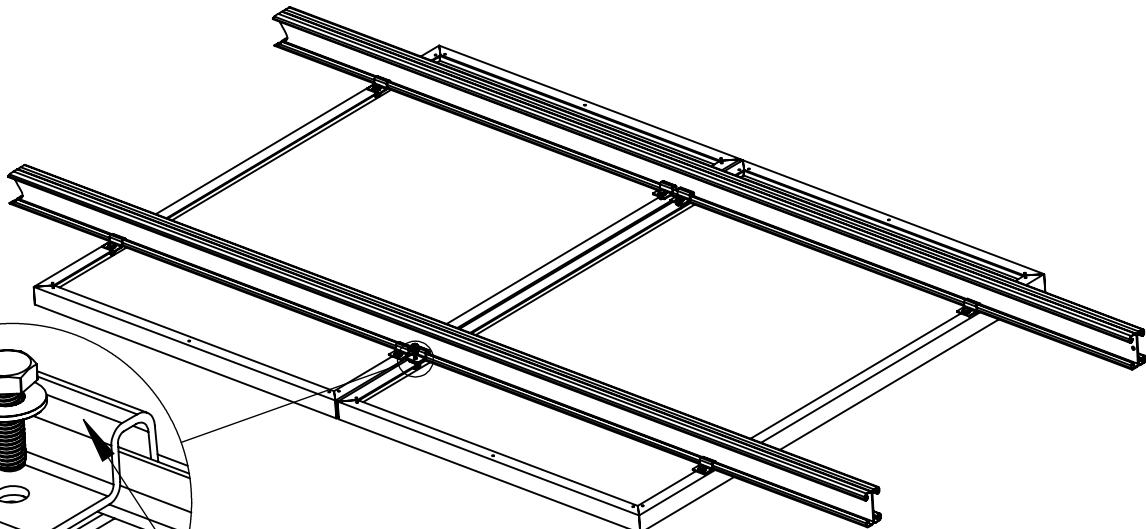
②

Align the 3" East-West I-Beams adjacent to the desired mounting holes



③

Insert the straight edge of the clip along the inside straight edge of the channel, with the WEEB-UIR underneath



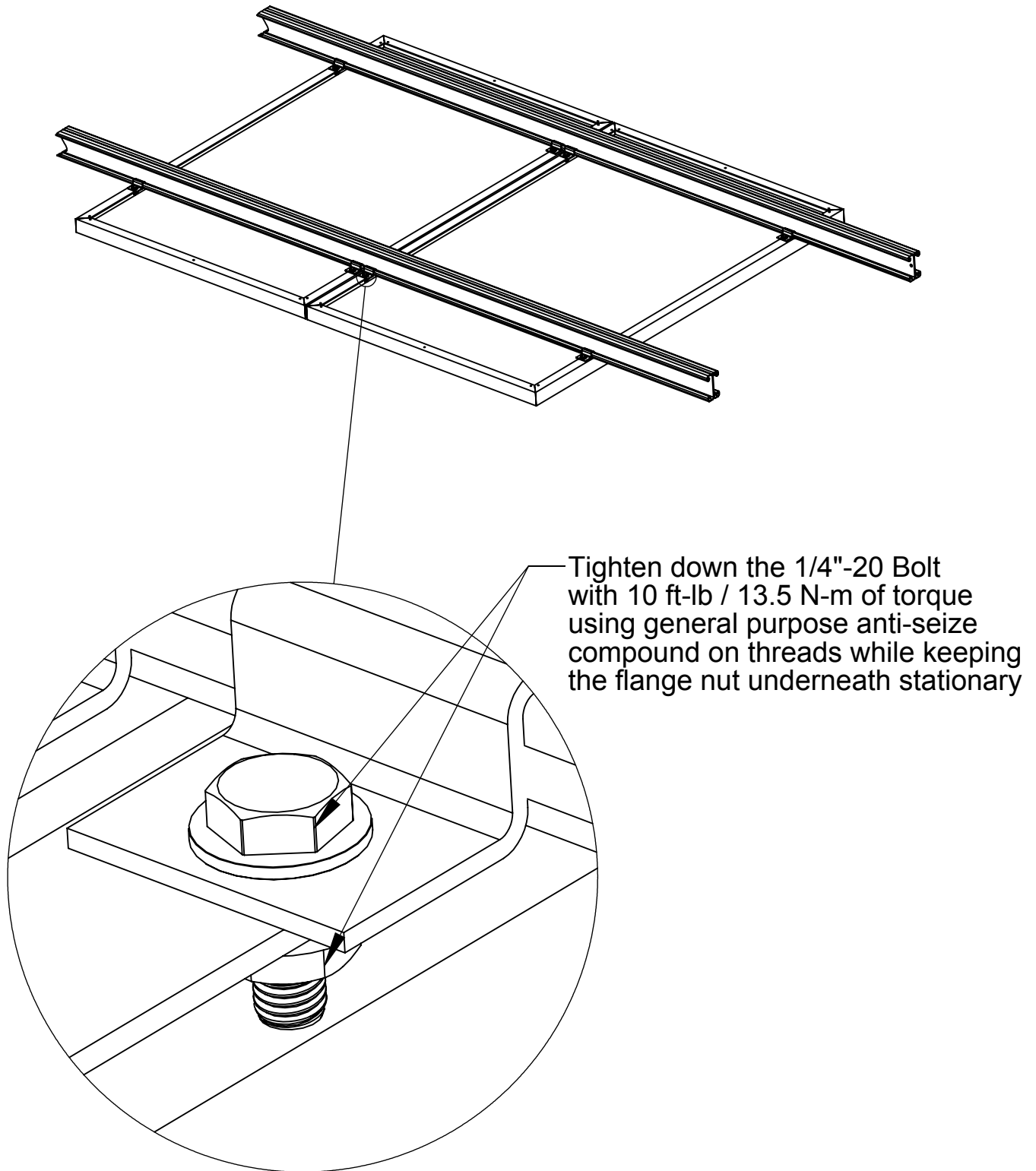
Install Small Module Clip  
Assembly according to  
manufacturers specifications

WEEB-UIR Teeth face the module frame



# WEEB-UIR ASSEMBLY

4



## Important note:

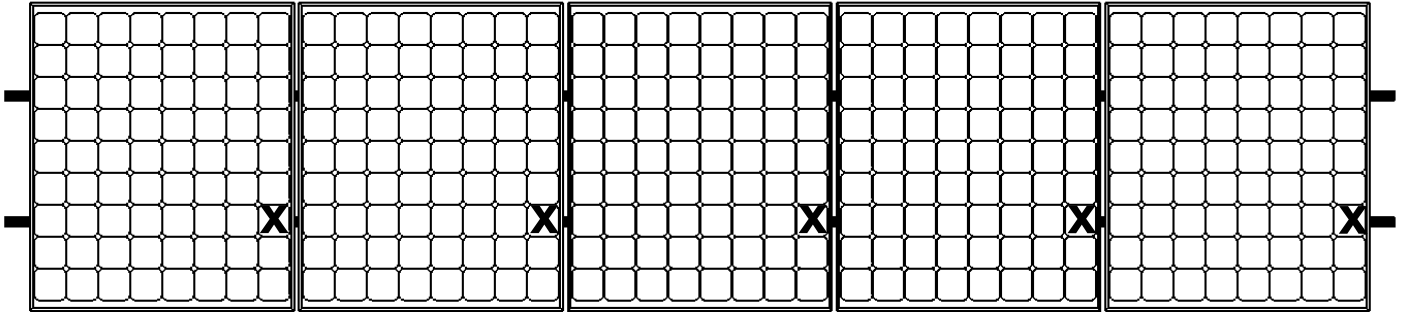
**WEEBs are for SINGLE USE ONLY! Do not torque fasteners down if position of solar modules is not finalized. Only slightly tighten fasteners to keep modules in place.**

5

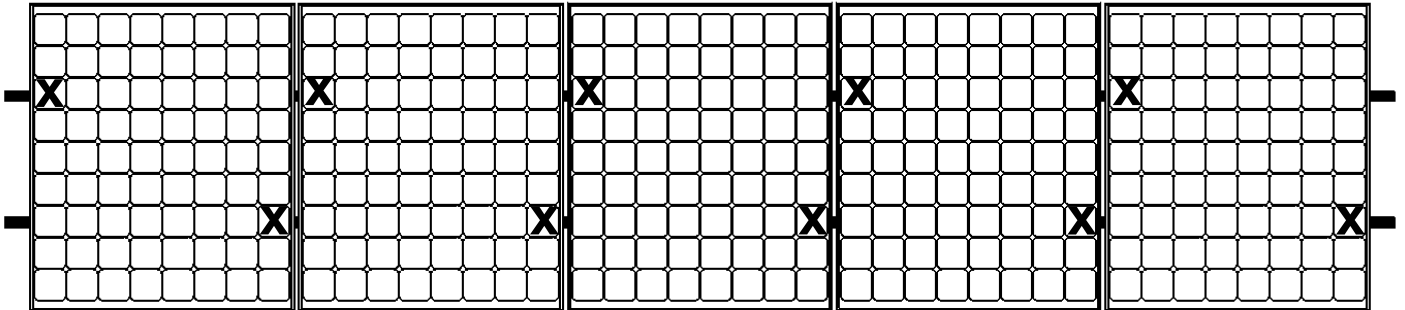
# WEEB-UIR LAYOUT

Please refer back to Page 4 to reference which mounting scenario is necessary

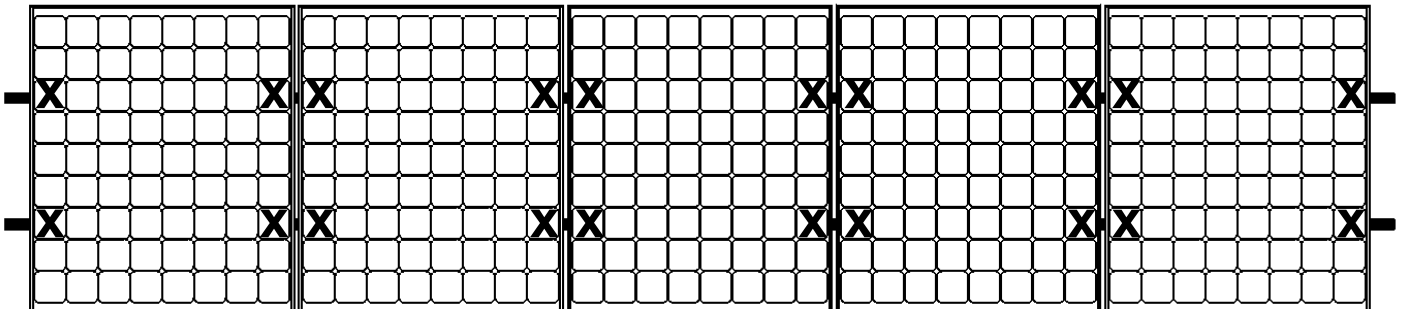
X DENOTES PLACES TO INSTALL WEEB-UIR



A



B

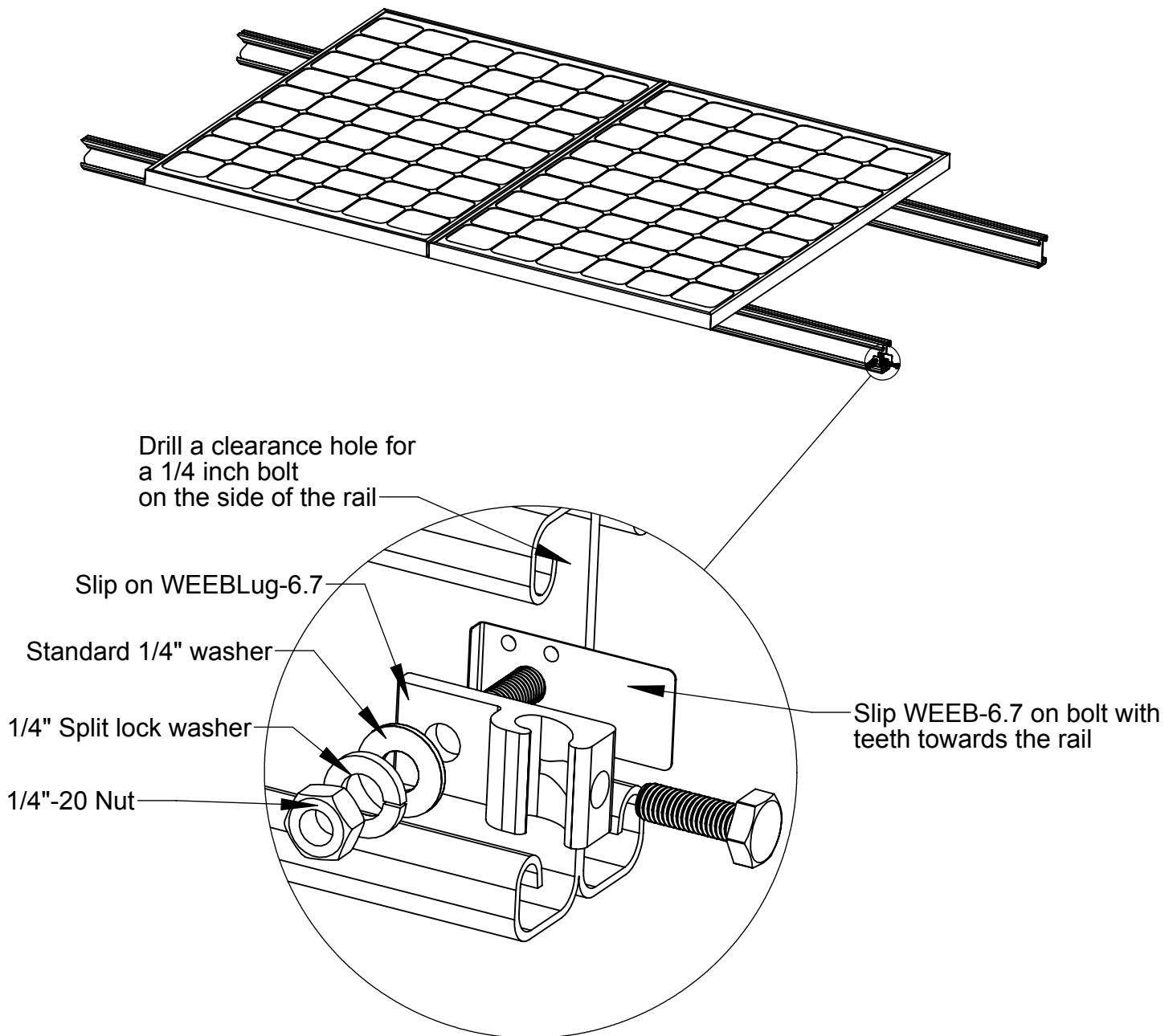


C

# WEEBLUG ASSEMBLY

⑥

Install WEEBLug-6.7 assembly and torque 1/4"-20 fasteners to 10 ft-lb / 13.5 N-m using general purpose anti-seize compound on threads.

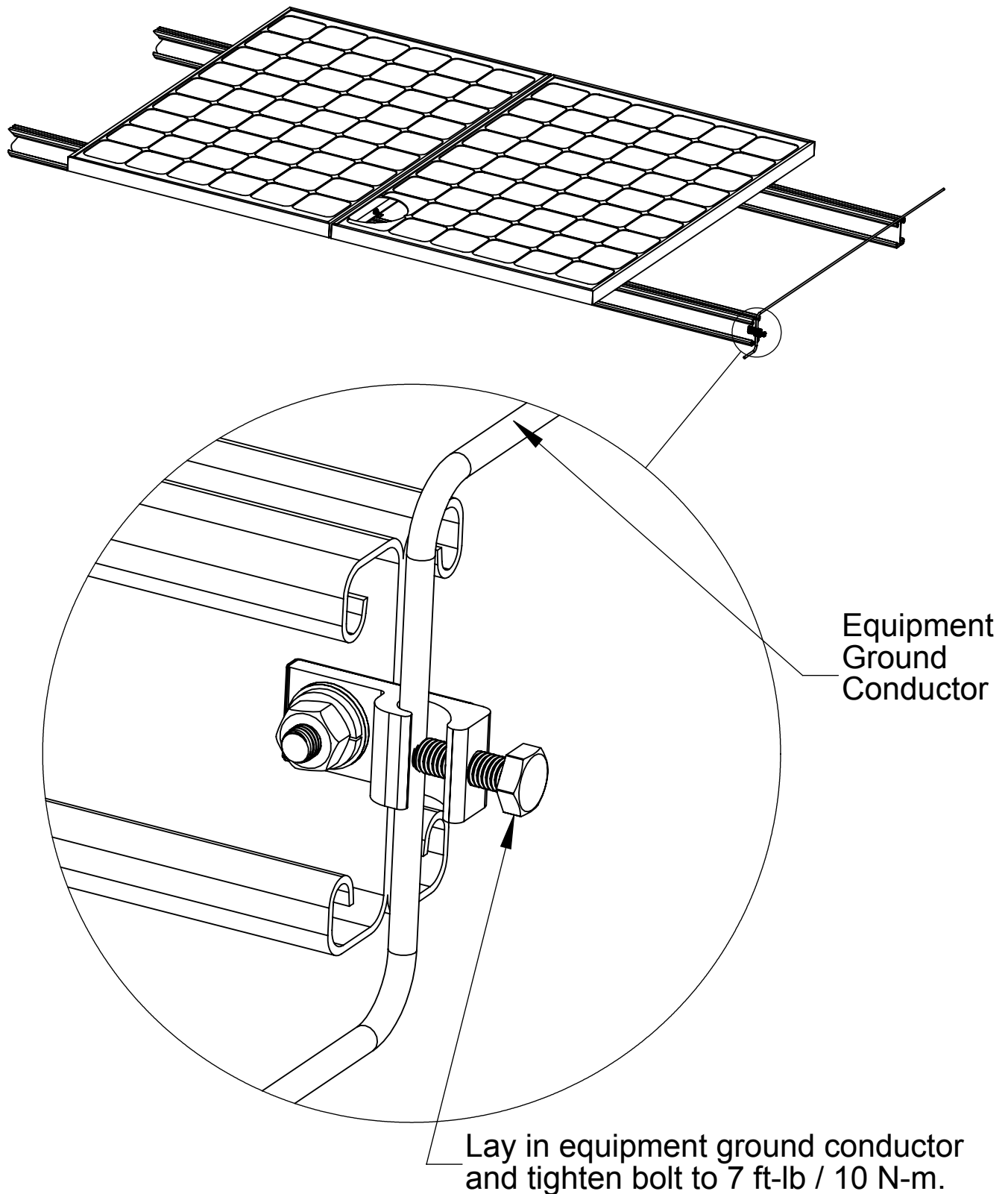


## Important note:

1. The WEEB-6.7 must always be used with the lug, despite the fact that galvanized steel is a conductive material. In accordance with the lug's ETL listing, it may not be used independent of the WEEB.
2. WEEB-6.7 that sits under the WEEBLug is for **SINGLE USE ONLY**. Ensure position is correct before tightening down.
3. The WEEBLug-6.7 may be used with a maximum equipment ground wire of 6 AWG.

# GROUND CONDUCTOR ASSEMBLY

7



## Important note:

1. WEEB-6.7 that sits under the WEEBLug is for **SINGLE USE ONLY**. Ensure position is correct before tightening down.
2. The WEEBLug-6.7 may be used with a maximum equipment ground wire of 6 AWG.